

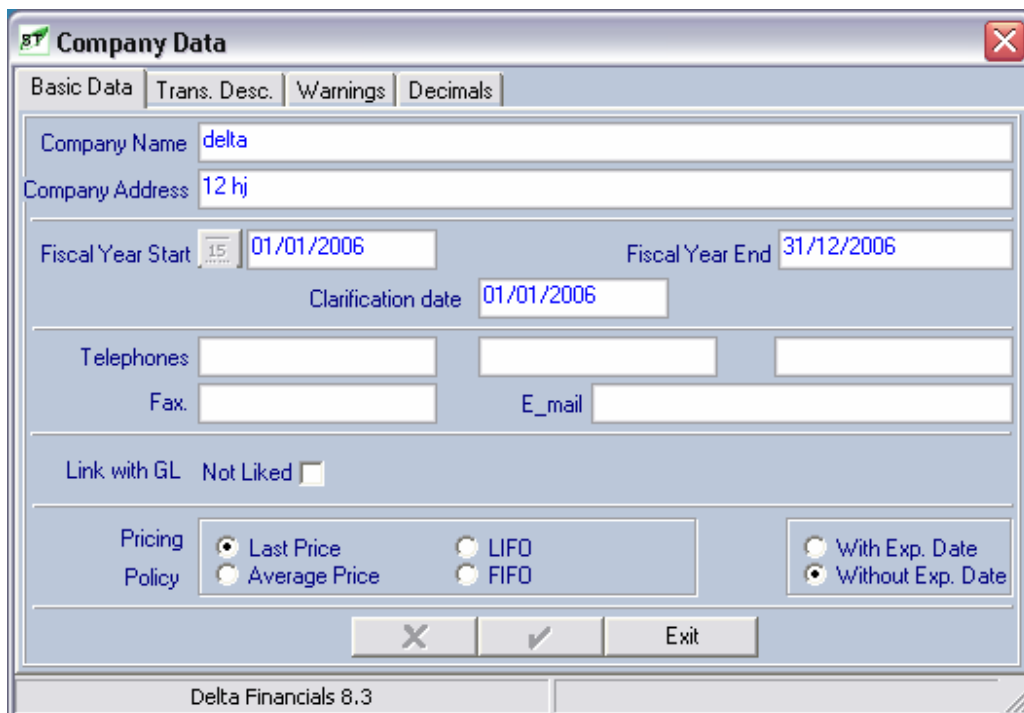
Stock Control System

- Allows the user to create infinite number of stores for a single company and provides a variety of pricing policies that the user can from to evaluate his stock.
- Allows the user to choose the price that would be displayed or printed in the items' card. It also allows the user to price the outgoing and transferred items from one store to another with cost or selling price, according to the user's needs.
- Allows the user to display and print the adding and issuing vouchers and the total item stocks turnover, with the possibility of printing the items, which are expired.
- Prints the analytical reports that show one or more item transactions from a stated store or receivable or for a kind of voucher, clarifying this transaction with values and amounts.
- The system gives the facility of displaying and printing the detailed or summarized reports that show the transactions occurring during a stated period of time.
- The ability to use different measuring units to the same item besides the ability to record issuing vouchers that include sets.
- The ability to use more than one type of transfer (from only, to only or both).
- The existence of different kinds of vouchers (adding, issuing, internal, adjustment, transfer).
- Allows the user to clear the transactions at any time according to the user's needs and this would not be limited to a stated period of time.
- Allows the user to use more than one method in posting (batch or online) according to his needs.

Screen Shots

Company data

Provides a variety of pricing policies (Last Price, Average Price, LIFO, FIFO) that the user can select from, the one suitable for evaluating his stock of raw materials, semi-final products and final products.



Company Data

Basic Data | Trans. Desc. | Warnings | Decimals

Company Name: delta

Company Address: 12 hj

Fiscal Year Start: 15 01/01/2006 Fiscal Year End: 31/12/2006

Clarification date: 01/01/2006

Telephones: [] [] []

Fax: [] E_mail: []

Link with GL: Not Liked

Pricing Policy: Last Price LIFO With Exp. Date
 Average Price FIFO Without Exp. Date

X ✓ Exit

Delta Financials 8.3

Addition Voucher

Flexibility to record, display and print the addition and issuance vouchers with the ability to select the expiry date option in order to control the addition and issuance transactions in conjunction with the selected pricing policy.

Addition Voucher

Basic Data | Account Data

Trans Date: 17/09/2006 Trans Type: Add. Return Analytical:

Order Store: مخزن 1 Trans No.:

Voucher no.:

Purchase Bill no.: Supplier No.:

Purch. Voucher no.: Resource:

Addition no.:

Store Code	Store Name	Item Code	Unit Code	Quantity	Price	Value
1	مخزن 1	100	3	10.00	5.00	50.00
3		1	1	5.00	2.00	10.00

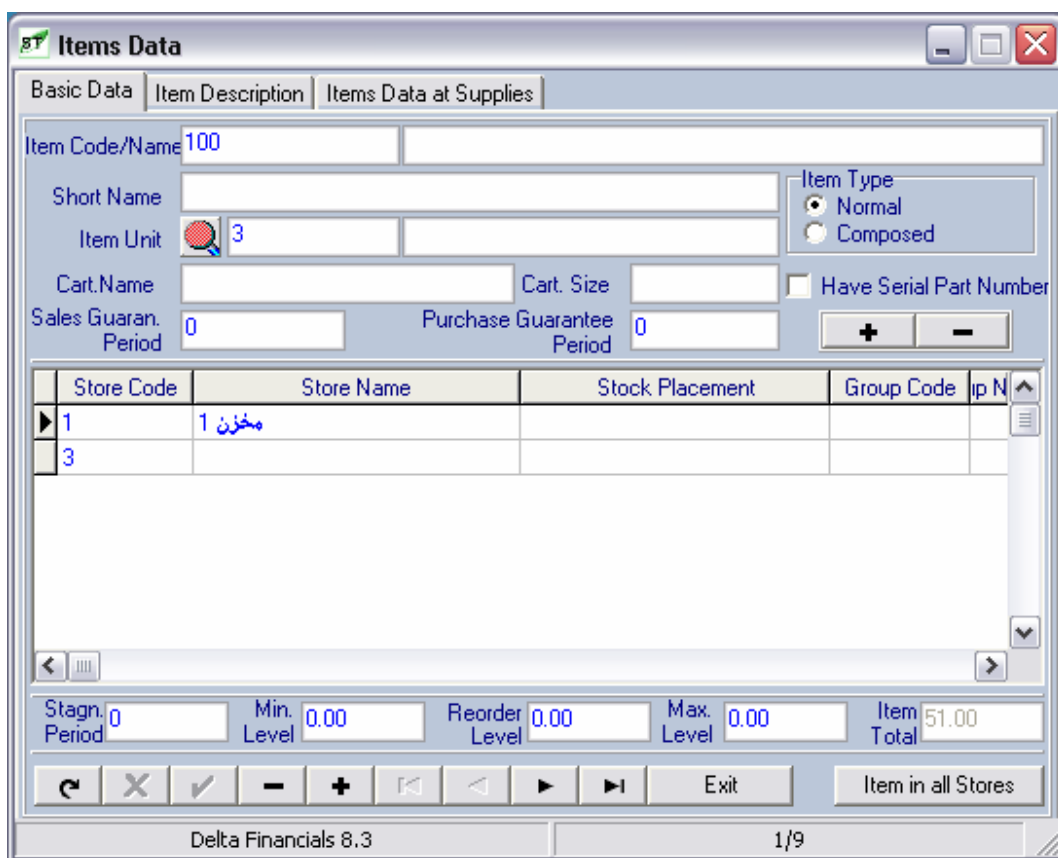
Item Name:

Trans Total: 60.00

Print ↻ ✕ ✓ - + ⏪ ⏩ ▶ ▶ Exit

Items Data

Allows the user to choose the kind of price that would be displayed or printed in the item's card. It also allows the user to price the outgoing and transferred items from one store to another with cost or selling price, according to the user's needs.



The screenshot shows the 'Items Data' window with the following fields and controls:

- Item Code/Name:** 100
- Short Name:** (empty)
- Item Unit:** 3
- Cart. Name:** (empty)
- Cart. Size:** (empty)
- Item Type:** Normal (selected), Composed
- Have Serial Part Number:** (unchecked)
- Sales Guarant. Period:** 0
- Purchase Guarantee Period:** 0
- Stagn. Period:** 0
- Min. Level:** 0.00
- Reorder Level:** 0.00
- Max. Level:** 0.00
- Item Total:** 51.00

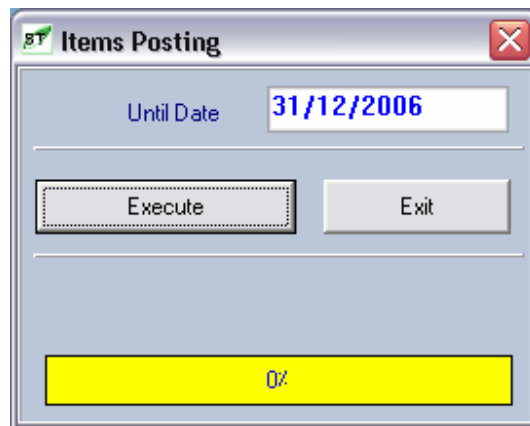
The table below shows the 'Items Data at Supplies' section:

Store Code	Store Name	Stock Placement	Group Code	ip N
1	مخزن 1			
3				

At the bottom, there are navigation buttons (Back, Cancel, OK, Delete, Add, Previous, Next, Exit) and a button labeled 'Item in all Stores'. The status bar shows 'Delta Financials 8.3' and '1/9'.

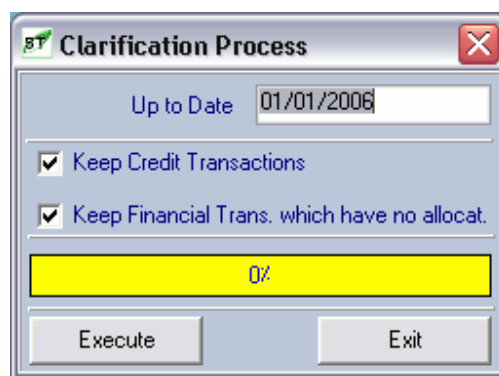
Posting

Allows the user to use more than one method in posting (batch or online) according to his needs.



Clearing

The clearing tab is used to set up the end of year procedures or the accounting period so as to transfer the current balances to previous ones. In other words to prepare the system to start a new period with clear opening balances and deleting all transactions of the previous period as well.



Reports Menu

The “Reports” menu makes you able to browse the stock control reports, by which you can display, the impact of transactions (issue - adding - returns) on the items’ balances (increase or decrease) through various reports.

