

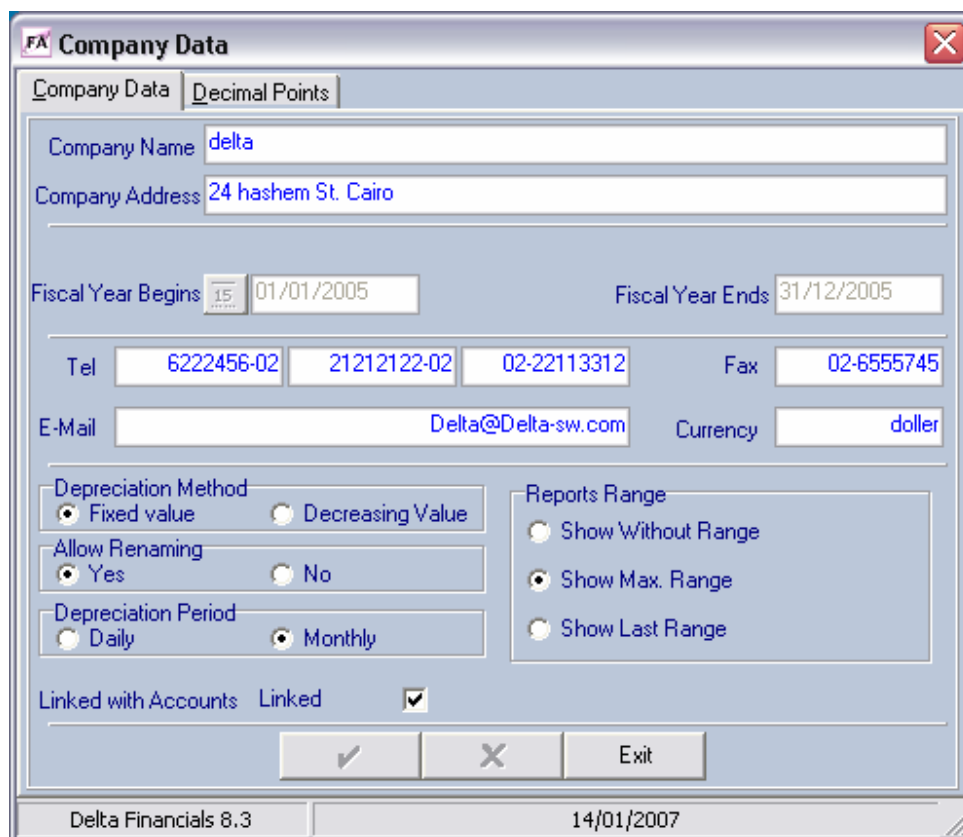
Fixed Assets System

- The system records any number of assets through the assets tree or the assets hierarchy with any number of levels.
- The system performs the daily or the monthly depreciation transactions for each recorded asset and creates the journal entries related to these transactions in the general ledger system automatically.
- The system handles the different types of assets' transactions (adding – scraping - excluding – selling – re-evaluating – changing the posts – registering -purchasing).
- The system provides plenty of detailed and summarized reports that cover all the aspects of the system.
- Define depreciation rules by asset category.
- Define your own depreciation calendars.
- Track all your assets.
- Track non-depreciating assets.
- Record the maintenance history of assets.
- Track asset insurance values to manage the risk of loss and damage.
- Perform physical inventory.
- Compare raw data with existing data.

Screen Shots

Company Data

Where you can type company name, address, telephone numbers, fax number, e-mail address, then you should select the start date of the fiscal year which represents the period selected by the business for the accounting measurements purposes.



Company Data

Company Name: delta

Company Address: 24 hashem St. Cairo

Fiscal Year Begins: 15 01/01/2005 Fiscal Year Ends: 31/12/2005

Tel: 6222456-02 21212122-02 02-22113312 Fax: 02-6555745

E-Mail: Delta@Delta-sw.com Currency: doller

Depreciation Method:
 Fixed value Decreasing Value

Allow Renaming:
 Yes No

Depreciation Period:
 Daily Monthly

Reports Range:
 Show Without Range
 Show Max. Range
 Show Last Range

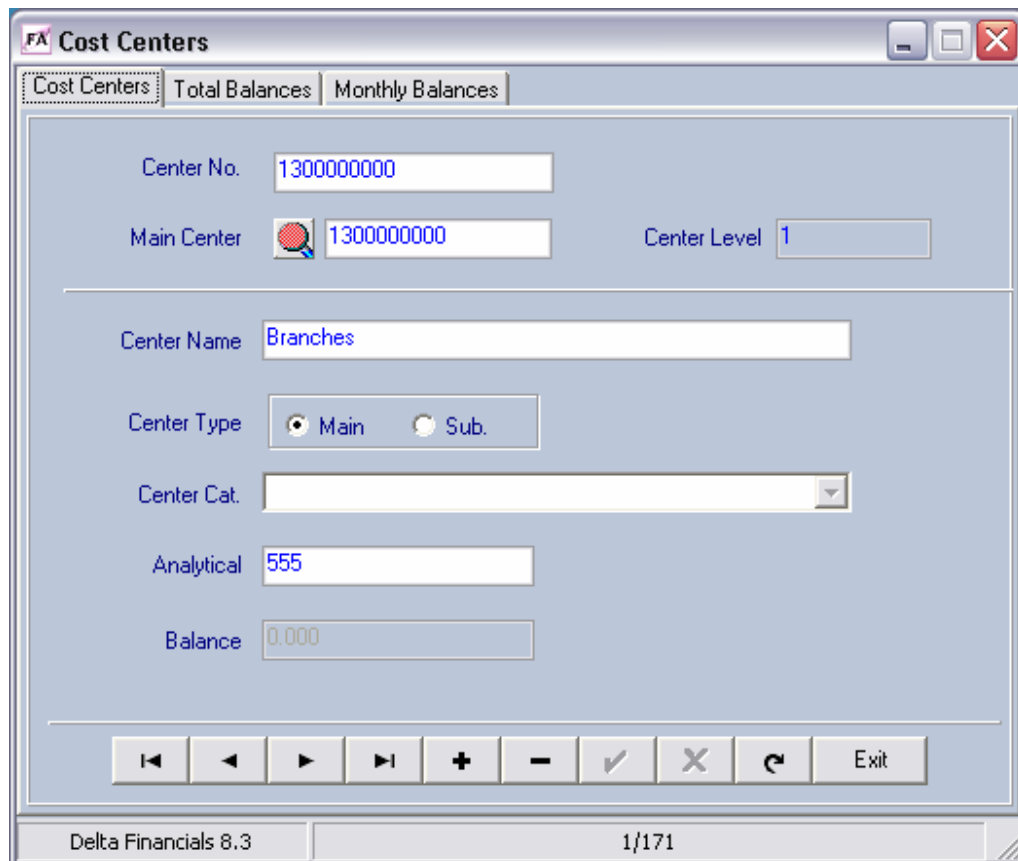
Linked with Accounts: Linked

Buttons: [OK] [Cancel] [Exit]

Delta Financials 8.3 14/01/2007

Adding Cost Center

Using this option enables you to divide your company to sectors or centers to distribute the revenues and expenditures for each center to know the exact and the accurate productivity for this center.



The screenshot shows a software window titled "Cost Centers" with a tabbed interface. The "Cost Centers" tab is selected. The window contains the following fields and controls:

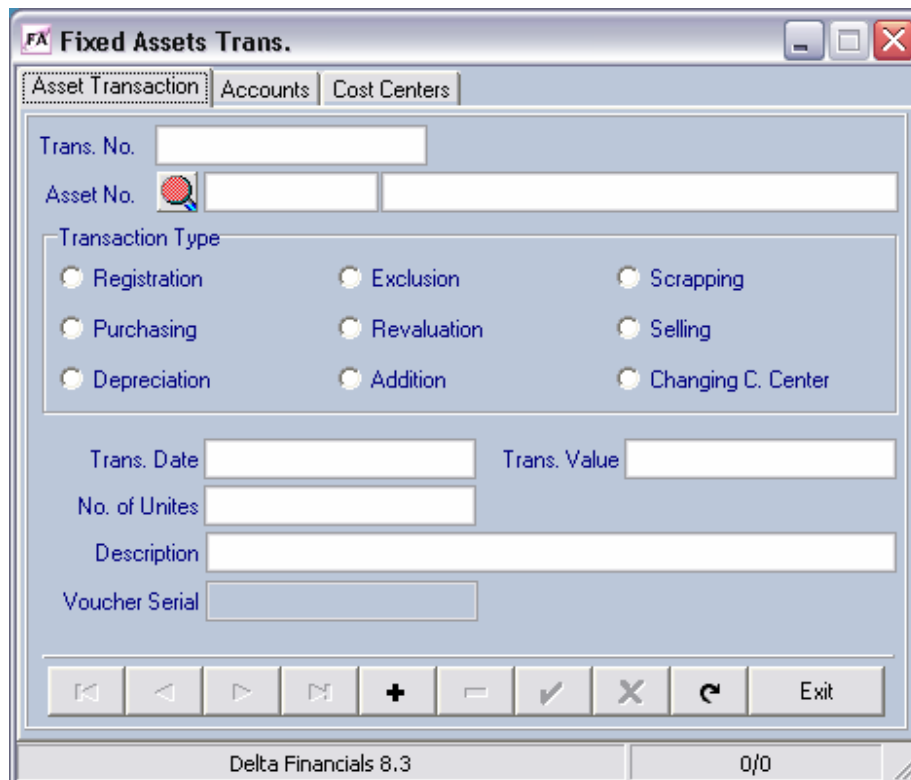
- Center No.
- Main Center with a magnifying glass icon to its left.
- Center Level
- Center Name
- Center Type Main Sub.
- Center Cat.
- Analytical
- Balance

At the bottom of the window, there is a navigation bar with buttons: Home, Previous, Next, End, Add (+), Subtract (-), Checkmark (✓), Close (X), Refresh (↺), and Exit.

Delta Financials 8.3 1/171

Assets Transaction

This option allows you to enter transactions such as: (Increase - decrease - revalue - disposal - sales - changing place).



FA Fixed Assets Trans.

Asset Transaction Accounts Cost Centers

Trans. No.

Asset No.

Transaction Type

Registration Exclusion Scrapping

Purchasing Revaluation Selling

Depreciation Addition Changing C. Center

Trans. Date Trans. Value

No. of Unites

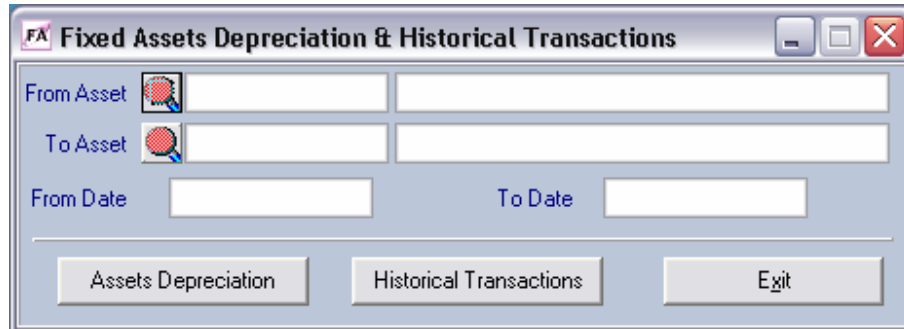
Description

Voucher Serial

Delta Financials 8.3 0/0

Prepare the Periodic Depreciation

This window is used to calculate the periodic depreciation for each asset.

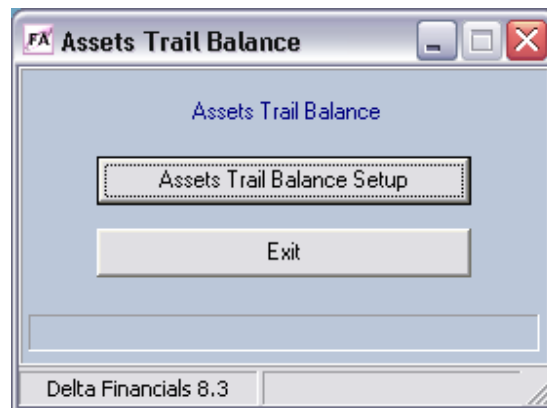
A screenshot of a software window titled "Fixed Assets Depreciation & Historical Transactions". The window has a title bar with a small icon and standard window controls (minimize, maximize, close). The main area contains several input fields: "From Asset" and "To Asset" each followed by a search icon and a text box; "From Date" and "To Date" each followed by a date input field. At the bottom, there are three buttons: "Assets Depreciation", "Historical Transactions", and "Exit".

From Asset	<input type="text"/>	<input type="text"/>
To Asset	<input type="text"/>	<input type="text"/>
From Date	<input type="text"/>	To Date <input type="text"/>

Assets Depreciation Historical Transactions Exit

Assets Balances

You can use this option to prepare the assets' balances, in other words to close the assets transactions in order to know the final value of the asset



Reports Menu

The “Reports” menu consists of a large number of analytical, summarized and detailed reports, which illustrates all system outcomes.

